

December 2023 - February 2024



# The Anchor

The Callala Beach Progress  
Association Newsletter



## CBPA social event

The CBPA would like to thank community members who supported our first social event since the COVID 19 pandemic.

Eager participants in the Sand sculpting (pictured below), and the rock painting competitions were deserved recipients of prizes that were highly contested. We thank our local State MP Liza Butler (pictured left with Santa and his Elf) for attending and for her judging of the rock painting, as well as her open conversation regarding our community issues and concerns.



The Callala Beach RFS gave Santa and his Elf a lift to the community hall and they shared some treats with children and took note of what is on the wish list of the children of Callala Beach.

An information session on the Jervis Bay Aquaculture provided an opportunity for key stakeholders to discuss existing and proposed plans for the future of the industry (see Page 3)



Pictured above:  
Callala Beach children meeting Santa and his Elf

*The CBPA would like to acknowledge the Traditional Custodians of the land in which we live. We acknowledge their continuing connections to the land, culture and community. We pay respect to Elders past, present and future.*

## Inside this issue

CBPA social event .....	1
Halloran Trust .....	3
JB Aquaculture update .....	5
CB project updates .....	6
Column 120 .....	7
CB Business profile Calabrisella Pizzeria .....	8
CB community profile .....	9
Directories .....	10

## Save the date

**Saturday  
27th JULY 2024  
Christmas in July  
celebration**



## What does CBPA do?

- Acts as Conduit of information to and from council
- Support local projects and initiatives
- Build sense of community
- Strives to keep our community safe, sustainable and clean

Share the  
newsletter

SCAN HERE



CALLALA BEACH  
NEWSLETTER

Our next general meeting will be at 7:00pm, on the 18th December 2023 at the Callala Beach Community Center - located at 89a Quay Rd, Callala Beach. [Click here for directions.](#)



## CBPA social event—Appreciation & acknowledgements

Thank you to:

- \* The Callala Beach RFS for their support with this event (below left).
- \* Donors and supporters of our raffle to cover event costs and congratulations to the winners.
- \* Liza Butler MP for her attendance and support
- \* V&C foods for “Santa’s treats”, Unicorn cheeses and Dan Murphy for the wine and IGA for the fruit platters. (right)
- \* Community members who supported the information session and event (see below right)
- \* Ian Lyall from the DPI and Sam Gordon from JB Mussels



Our committee are committed to making these events a part of the Callala Beach and Myola social calendar, so look forward to seeing you at future events.



**The CBPA committee:** Left to Right: Gail Redgate, Trevor Smith, committee support Elf Clare Roden, Geoff Carne (Santa)), Geoff Brennan, Anne Versitano, Jan Holdsworth, Colleen Psarros, Jenny Anstiss. Missing: Shirley Clarke



Keen rock (and shell) painters at work!



Entries in the rock painting competition



Jan and Gail “guarding” the raffle prizes



## Name the newsletter competition

The winning entry of our competition to name your CPBA newsletter was “The Anchor”. This reflects the newsletter as being a tool that can help “anchor” the community. An anchor can provide a benchmark from which we can measure the progress in our community. We thank the winner who prefers to remain anonymous

The runner up title was the “120”, As we know the Bus Route 120 is an important means of connecting our community of school children, residents and visitors alike travelling from Myola and Callala Beach to further surrounds and the distant reach of Bomaderry Station.

We thank Cilla for her entry. The 120 will be a column in the Anchor dedicated to snippets of information that can keep the Callala Beach and Myola communities informed.

Both winners will receive a voucher for their contributions.

---

## Callala Bay Land Development :

*We recently asked Matt Philpott, Managing Director – Land & Development, Sealark to answer some of our questions regarding the Callala Bay Land Development. Thank you Matt for your responses and we look forward to finding out more in the future.*

### How would you describe the Callala community?

Callala is a friendly and welcoming community. There is a good mix of age groups which provides a great foundation for a rich community life. Callala is located between the bay and the bush and many of the members of Callala’s community have chosen to live here because they love those connections with Country. Callala is a great place to bring up a family and also to spend retirement years.

*“We’re a Shoalhaven company and the Halloran family has a long history in the region, spanning over 100 years, so we’re heavily invested in the future of the area and its beautiful natural environment..”*  
Matt Philpott

### What impacts do you believe development of The Halloran Trust land will have on the Callala community in the short term?

“While planning work continues to progress, the main physical site works on the first stage of the development are several years away. Once work commences, the subdivision will be undertaken progressively over an estimated 10 to 12-year timeframe.

“While we acknowledge there will be environmental impacts when work on the subdivision begins, it’s also important to acknowledge Sealark has already protected close to 2,200 hectares of its land in four separate Biodiversity Stewardship Sites in the local area which preserve expansive areas of the same vegetation types that exist at Callala Bay. Areas of this landscape that were traditionally grazed with beef cattle are being reforested to improve biodiversity outcomes across the region. Our plan is that 1,086 hectares of that land, parts of which are directly adjacent to the Callala Bay development site, are dedicated as an extension to the Jervis Bay National Park.

We know and respect how much the Callala community love their town, the Bay, their environment and the lifestyles they all lead in this beautiful area. Sealark, which is wholly owned by

The Halloran Trust, is a company that also has deep ties and a deep love for this beautiful region and a long history in Callala Bay. In fact, the Halloran name has been associated with the area for over 100 years.

“We know this area, like many others across the state and country, is facing housing stress with a critical housing shortage. We also appreciate that many local businesses which depend on the seasonal tourism economy are doing it tough. Through the extension of the Callala Bay village, we will contribute to the social, economic and environmental prosperity of the area for many years to come.

“Sealark is committed to ensuring Callala Bay has a bright future, protecting and celebrating the character of the stunning natural environment as we progress with our development proposal.”

# “Callala Bay Land Development”

## What is

### “the Halloran Trust”

The Halloran Trust was established by Warren Halloran in memory of his father Henry Halloran who was an active advocate for town planning in the first half of the 20th Century. The trust brings together industry, government and educational institutions to research and implement town planning, urban and regional development and land management.

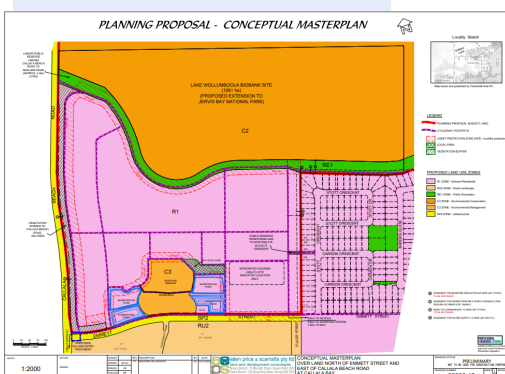
### Who was Henry Halloran?

Henry Halloran (Warrens' father) was a major property owner and developer in NSW. His developments include Seaforth, Warriewood, and subdivisions in Stanwell Park.

### Who is Sealark Pty Ltd ?

Is a property development company that was established in 2012 by Warren Halloran. According to the Sealark Website the company's vision is to “create high quality property developments that reflect Warren Halloran's passion for environmental conservation”.

### Where is the section of land we are talking about in Callala Bay



## How would you describe the Callala community?

“We’re committed to protecting the character of the natural environment and embedding sustainable development principles into the Callala Bay project, and we look forward to keeping everyone informed as we progress. We are also looking forward to working with the community throughout this long-term development.

## What impacts do you believe development of The Halloran Trust land will have on the Callala community in the longer term?

“As the residential subdivision progresses through to completion, and new homes are constructed, new families and other new households will also be able to call Callala home. It also provides an opportunity for existing residents to relocate into the new subdivision and to construct a dwelling that is more fitting for their changing needs.

“As we all know, there is a critical housing shortage in our region, throughout New South Wales and nationally. The new homes we are delivering at Callala Bay and West Culburra will be part of the solution to addressing this housing shortage in a local context.

“Additionally, at Callala Bay, we will be gifting land to a Tier 1 Community Housing Provider to facilitate the construction of 40 affordable homes for essential workers and other households in need to ensure we play our part in providing new affordable housing to people in our region.

“The creation of approximately 380 new homes at Callala Bay means new job opportunities for local people, new economic opportunities for local businesses, and new investment in the community's future. The additional households will also support the existing shopping precinct and the local school.

“Our development plans include approximately 7.5 hectares of open space with over 5 hectares of bushland reserve, over 2 hectares of wetlands to enhance and maintain high quality stormwater treatment in the area, a new community park of around 4,600sqm that will include play equipment and other community facilities and a linear reserve along the entire northern edge of town that will provide walking trails and cycleways that will connect the area from Callala Beach Rd to Sealark Rd and the Wowley Creek area. This space is currently private property but it will become available to the whole community.

“While tourism is important to the local economy, its seasonal nature creates a challenging environment for local businesses. Sealark is looking forward to supporting a more stable permanent population, more local jobs, supporting new and existing local businesses, and encouraging new investment in the community's future.”

## How can we ensure there is a balance between development, infrastructure and the environment in the Callala area?

“The planning approvals processes requires detailed assessments to be undertaken on the impacts of the development to ensure there is a balance between development and the environment. The provision of infrastructure to support the new development has also been identified.

“The Halloran Trust is a not-for-profit organisation that exists to provide financial support, derived from Sealark's development and conservation activities, to charitable beneficiaries, including in the local community and the wider Shoalhaven region.

“We strive to create the ideal balance of social, economic and environmental outcomes. As we progress our developments at Callala Bay and West Culburra, we'll be engaging closely with the community to ensure these projects deliver the new homes people need, local jobs and economic opportunities for local businesses, in an environmentally sustainable way.



## What is Jervis Bay Aquaculture?

Department of Primary Industries (DPI) Fisheries Section approved the leasing of sections of Jervis Bay for the establishment of mussel leases in 2017.

## Who manages the mussel leases?

Jervis Bay Mussels are a locally owned private company that employs over 50 local staff. They have established the leases and harvest and sell mussels to local restaurants and providers and more broadly to supermarkets all over Australia.

## What does the mussel lease look like under the surface?

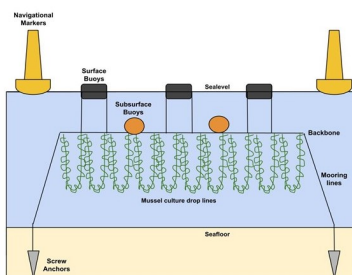


Figure 2. The infrastructure layout of the leases.

## What are the impacts of the relocation?

- \* the leases will be moving to the north west by 250 metres
- \* Expansion of the leases will essentially be deepening of the drop lines
- \* Number of beacon lights will be reduced

## Jervis Bay Aquaculture Information Session

Recently the CBPA held an information session to understand the current proposal for presented by Ian Lyall from the dept of Primary Industry (DPI) and Sam Gordon from Jervis Bay mussels, to explain the impact on JB and more specifically Callala Beach.



Relocation of current leases closer to Callala Beach are required in accordance with meeting requirements for naval boundaries. In doing so a decision not to proceed with one previously proposed lease development near Vincentia has been made. Two leases in Callala Beach will move approximately 250m north west &

expand by 5ha each to 25ha

and one lease in Vincentia will move to Callala Bay & expand by 10ha to 20ha.

There will be an increase in the depth of the culture drops of the leases as well as

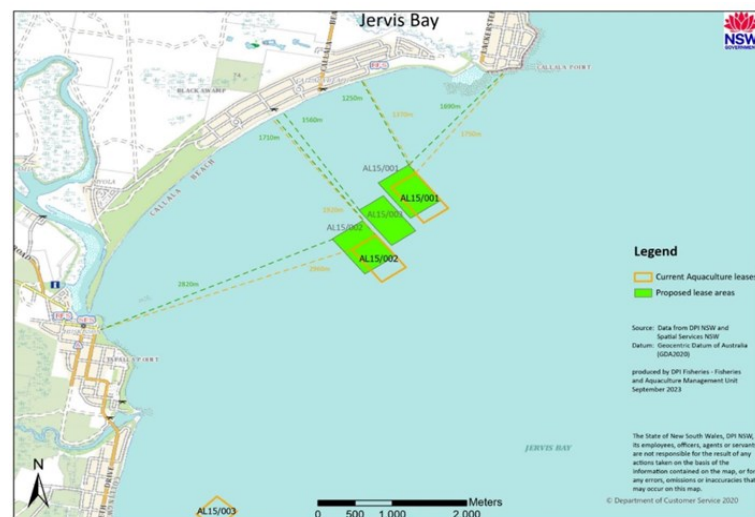


Figure 1. Map of Jervis Bay showing the current location (orange outlines) and proposed modification of the aquaculture leases (green filled polygons).

the extension shown in Figure 1 below. This will not incur any increase in the number of surface buoys that will be visible. There will also be a reduction in the number of navigation lights illuminated from 8 to 4.

Sam and Ian were happy to address questions and concerns raised by community members regarding environmental and visual impacts. NSW DPE has accepted the Modification Application and as advertised on CBPA social media was on public exhibition from 28 November to 11 December 2023.

NSW DPE will notify agencies and has sent correspondence to stakeholders who commented on the original Environmental Impact Statement/State Significant Infrastructure application in 2014.


### How do we find out more ?

<https://www.dpi.nsw.gov.au/fishing/aquaculture/spotlights/modification-application-shellfish-leases> .


<https://www.planningportal.nsw.gov.au/major-projects/projects/modification-jervis-bay-mussel-farms-relocation-and-expansion>

[Jervis Bay Mussels – The most sustainable farming in the world \(jervisbaymussels.com.au\)](https://www.jervisbaymussels.com.au)

## CBPA project updates    *Anne Versitano CBPA secretary*

PROJECT TITLE / DESCRIPTION	DATE PROPOSED	COST	STATUS
<i>Projects that are progressing:</i>			
<b>Lighting of Silkwood Walk Pathway in Benton Sands</b>	2021	\$25k	Lighting investigation and design is complete. An estimate for construction is in progress for a grant funding application to be made. Concept design is completed.
<b>Quay Rd Shared User Path (SUP): Stages 1 and 2</b>	2017	\$1.85m	Detailed designs proposed to be completed in 2024/25 and construction has been moved by Shoalhaven City Council (SCC) to 2025/26 for Stage 1 (\$900k) and 2026/27 for construction of Stage 2 (\$900K). Funding applications for stages of the network for construction are in progress.
<b>Myola Boat Ramp</b> 	2018	Better Boating Grant received at SCC	Design is completed and Crown Licence obtained. The project has been handed over to district with tenders to be sent out once the funding shortfall is addressed. A request for approval for additional grant funding has been made to the grant body. Even though funding originally targeted for the Callala Bay boat ramp has been diverted to the Myola boat ramp, the cost estimated for the design is higher than the combined grant funding.
<b>Callala Beach to Bay Shared User Path (SUP)</b>	2021	Cost yet to be estimated	Concept designs are completed. The paths will be delivered in a number of stages. Delivery of each stage will be subject to grant funding applications to be submitted and approved before finalising the design and for construction to commence. Money for the first stage of the SUP in Sheaffe S Callala Bay is in Council's 2023/24 budget
<b>Myola Active Transport Improvement Project (MATIP): car parks, foot-path and amenities block</b>	2019	\$1.235m	This project is dependent on confirmation of State Government funding. It will be delivered in the fourth quarter of the 2023/2024 financial year. SCC has received a letter from the State Government confirming that funds have been allocated in the budget (for MATIP), but deeds have not as yet been signed. SCC are still waiting on the all clear to get started.

## CBPA Project Updates

<b>Projects that have been stalled</b>  <b>Currumbene Creek/Myola Fishing Access Improvements (on the training rock wall) (Project 106500)</b>  	2019	\$100k + Govt funding received at SCC	<p>Concept design completed in 2022 and Council are discussing with the grant provider, DPI, on the viability of continuing to fund the detailed design if construction costs exceed initial estimates. This project is dependent on the adjacent car park and footpath to allow access to the training wall/facility – so this is connected to the success of the MATIP (see above).</p>
<b>Parkes Crescent Recreation Playground</b>	2021	\$93k	<p>This playground renewal is to be budgeted for in Council's 2028/29 budget.</p>

### **COLUMN 120: Keeping Callala Beach & Myola update and connected**

#### **Solar Lighting on the corner of Forest Rd and Callala Beach Rd**

Thanks to the persistent efforts over the past year by one of our members, Tricia Brett, this street lighting installation will now be getting an upgrade. Following concerns raised by Tricia, Shoalhaven City Council (SCC) has inspected the site and agreed that the light is not aimed at the most optimal angle for illumination of this intersection. SCC has discovered incorrect uplift bracket had been supplied. A 0-degree bracket was supplied and installed instead of the correct 23-degree bracket. SCC is currently working with the supplier and installer to rectify this issue and install the correct bracket which should provide a more even spill of light onto the intersection

#### **Complete the Survey—Shoalhaven City Councils Financial Sustainability**

You will have noticed an increase in your recent rates and proposed changes in infrastructure projects in the Shoalhaven. Make you sure take the opportunity to have your say by completing the online survey by January 10th 2024 [Planning for a sustainable future | Get Involved Shoalhaven \(nsw.gov.au\)](#)

#### **Volunteering**

Callala Bay Vinnies needs local volunteers, for Fridays and other days.

Contact Cheryl on 0490 245 213 or apply online. Retail Volunteer - Vinnies Callala Bay, St Vincent de Paul Society NSW <https://www.volunteer.com.au/volunteering/146789/retail-volunteer-vinnies-callala-bay>

#### **Have Your Say on The Open Coast and Jervis Bay CMP Stage 4**

The Open Coast and Jervis Bay Coastal Management Program (CMP) is on public exhibition for community consultation until 5pm on 2 February 2024 as part of Stage 4 . This covers a study area that includes beaches located along the 165 km of coastline managed by Council - from Shoalhaven Heads , to North Durras . Estuary areas within the Shoalhaven are not included in the study area for this CMP and will be addressed [in separate CMPs](#). The [draft CMP](#) document can be accessed through the Document Library on the [Get Involved web page](#). Complete the [Online Survey](#)

<https://doc.shoalhaven.nsw.gov.au/displaydoc.aspx?record=D23/488730>

## Callala Beach Business Profile : *Antonella —Calabrisella Pizzeria Callala*

### **What do you miss most about Calabria**

It is not very popular but there are beautiful beaches and characteristic little villages!!

What we miss the most about Calabria is our family! Generally during public holidays or even once a week the whole family gets together and have big dinners with lots of guests and good food...everyone is invited to these events even



those who are not part of the family...so there is a great sense of hospitality and share food is a

way to gather for all

### **What is Calabrian food like?**

If you have a chance to go to Calabria I can suggest to try local fish in particular Panino with Swordfish and Calabria is the right place for seafoodlovers, Nduja which is a spreadable fermented salami very spicy and it is really popular and used in many recipes of our traditional cuisine, or you have to try Tartufo di Pizzo ( in English Truffle of Pizzo) it is a gelato dessert composed of two flavours of gelato with a melted centre of chocolate sauce...it is delicious!!

### **What inspired your menu?**

We decide to include in our menu some of the most traditional dish and that people can usually

find in Italy. Every plate should transport our customers in there and make feeling that you can experienced in Italy.

### **Where do you source your ingredients**

Our ingredients are wisely chosen according to the quality and we use a good combination of ingredients made in Australia or coming directly from Italy as Flour or Pasta

### **What does the future hold for Calabrisella ?**



We hope that Calabrisella in the future becomes an important place for the community to share good food and good times with their family and friends.

### **What is your secret for you amazing gnocchi ?**

The secret to make good gnocchi is use right potatoes and a good quality flour.

### **What do you like most about Callala?**

We are feeling really lucky to live Callala it is a nice spot where to live we like the peaceful atmosphere and the uncontaminated nature..we really like on our day off walking in the beach with our little puppy Luna or just enjoy the view of colourful sunsets

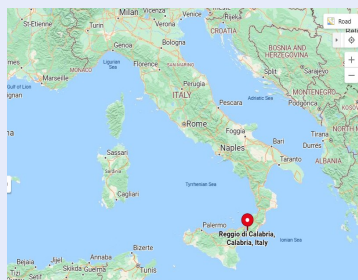
Grazie

### **FROM CALABRIA to CALLALA**

**Calabrisella Pizzeria**

**Shop 8/114 Quay Rd  
Callala Beach , 2540**

**CONTACT DETAILS (02) 44027456**



### **OPENING HOURS\***

Wednesday 5-9pm

Thursday 5-9pm

Friday, Saturday &

Sunday 7:30-1pm

5-9pm

Closed Monday & Tuesday



## Boomerang Bags (BB): Callala Bay Beach and Myola

We have had another productive couple of months in the sweat shop...and we have been donated some wonderful material so keep your eyes out for some pretty bags... we are still sewing bags for the Cancer Centre with another delivery this month of 50 bags, so we are nice busy ...Our grand total **\$8345**.

We would love it if you could take a photo of Boomerang Bag and flood our Facebook page....Even this far into our boomerang bag journey we have some new members joining our group ....and loving the laughs. We want to give a big shout out to Shoalhaven



city council for their support of venue hire and labels ....and IGA for assisting us with our morning tea (see pictures at left) .....so please come on down and join even if it is only for a cuppa at 10.30....we would love to say hi.

We will be taking a well-earned break over December /January so if you have any Bags hiding in your boot or in the back of your cupboard ...please dig them out and

pop them in the stand at IGA....and don't forget there is a donation tin ! the funds go towards supplies.



### CONTACT:

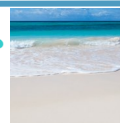
Kay 0412 691 833

Shirley 0413 592 778

FB: Boomerang Bags Callala Bay Callala Beach and Myola



## Summer at Callala Beach



For many members of our community the passion for Callala Beach spans across generations. With summer approaching, family and friends come together to share the wonders of our amazing village. Shirley Clarke has shared with us the love that her daughter and her grandchildren hold for Callala



*"Callala Beach holds so many special memories for us, we have been visiting since I was 15. We got married on the beach on a beautiful sunny day! Now my children have been able to spend many days at the beach playing in the water and sand on sunny or cloudy days, its always fantastic. Loving making memories with my family at Callala Beach". Jacqui*

*"I love Callala Beach because it's where we get to visit our grandparents. I like that the water is mostly calm and we can play in the waves and not get scared. I love taking my dog to beach, she loves digging in the sand". Grandson*



*"I love the sand at Callala Beach it is so white and makes the best sandcastles".*

Chelsea



## Community service contacts

SERVICE	CONTACT DETAILS
Police	<a href="tel:0244219699">(02) 4421 9699</a> - 88 Plunkett St, Nowra NSW 2541
Shoalhaven Hospital	<a href="tel:0244239500">(02) 44239500</a> 2 Scenic Drive Nowra NSW 2541
Doctor	Callala Medical Centre 6 Chisholm St, Callala Bay <a href="tel:0244465350">(02) 4446 5350</a>  Culburra Beach Medical Centre <a href="tel:0244475430">(02) 4447 5430</a> Culburra Rd & Prince Edward Ave &, Canal St E, Culburra Beach NSW 2540
Bus Service	Stuarts Coaches (02) 4421 0332 <a href="#">Stuarts Coaches - Welcome Onboard!   Stuarts Coaches</a> Timetable (Aug 2023) <a href="#">Timetable For Go Live .xlsx (amazonaws.com)</a>
Pharmacy	Callala Bay Pharmacy <a href="tel:0244464251">(02) 4446 4251</a> - 2/55 Emmett St, Callala Bay NSW 2540  Culburra Pharmacy – <a href="tel:0244472382">(02) 4447 2382</a> 187 Prince Edward Ave, Culburra Beach NSW 2540
Veterinary	Culburra Veterinary Clinic <a href="tel:0244473851">(02) 4447 3851</a> - 7 Weston St, Culburra Beach NSW 2540  South Coast Veterinary Services (Mobile with home visits) P: 0412319110 E: <a href="mailto:office@southcoastvet.com.au">office@southcoastvet.com.au</a> <a href="#">Mobile Vet, South Coast   Nowra, Callala, Jervis Bay, Vincentia, Huskisson (southcoastvet.com.au)</a>
Council including after hours and Ranger	<a href="tel:1300293111">1300 293 111</a> - 36 Bridge Rd, Nowra NSW 2541 <a href="https://www.shoalhaven.nsw.gov.au/Contact-Us">https://www.shoalhaven.nsw.gov.au/Contact-Us</a>
NSW Maritime Jetski Reporting	131236
Husky Ferry	tel:+61467648504 <a href="#">The Husky Ferry Service</a> <a href="mailto:david@huskyferry.com">david@huskyferry.com</a>
MP's	Fiona Phillips <a href="#">Fiona Phillips MP</a> (02) 4423 1782 <a href="mailto:fiiona.phillips.mp@aph.gov.au">fiiona.phillips.mp@aph.gov.au</a>
STATE	Liza Butler <a href="#">Liza Butler - Member for South Coast (nswlabor.org.au)</a> (02) 4421 0222 <a href="mailto:southcoast@parliament.nsw.gov.au">southcoast@parliament.nsw.gov.au</a>
LOCAL Ward 2	<a href="#">Mayor &amp; Councillors   Shoalhaven City Council (nsw.gov.au)</a>  Paul Ell E: <a href="mailto:paul.ell@shoalhaven.nsw.gov.au">paul.ell@shoalhaven.nsw.gov.au</a> tel:0417 981 536  Greg Watson E: <a href="mailto:greg.watson@shoalhaven.nsw.gov.au">greg.watson@shoalhaven.nsw.gov.au</a> tel:0412 210 979  Evan Christen E: <a href="mailto:evan.christen@shoalhaven.nsw.gov.au">evan.christen@shoalhaven.nsw.gov.au</a> tel:0417 861 625  John Kotlash E: <a href="mailto:john.kotlash@shoalhaven.nsw.gov.au">john.kotlash@shoalhaven.nsw.gov.au</a> tel:0417 943 393

## Community Activities - All Welcome!

ORGANISATION	CONTACT DETAILS	What / When *CBCH (Callala Beach Community Hall, 89 Quay Rd, Callala Beach
Boomerang Bags	Kay on 0412 691 833 Shirley 0413 592 778	3rd Wednesday of the month 9.30 till 2 CBCH
Callala Beach Community Hall Hire	Sandra 0413581419	
Callala Beach Progress Association	info@	3 <sup>rd</sup> Monday every second month 7pm CBCH
Callala Beach Tennis Court Hire	0406542237	
Callala Beach Social Tennis	Monday Barry 0491150878 Sunday Sue 04096 312 505	
Callala Community Garden	52 Emmett St, Callala Bay <a href="#">Welcome!</a> <a href="http://callalacommunitygarden.com.au">callalacommunitygarden.com.au</a>	Tuesday to Thursday 9-12 noon Family fun Friday last Friday of the month 9:30-11:30 Produce stall 2nd Saturday of the month
Callala Markets	Sandra 0413581419	2 <sup>nd</sup> Saturday each month 8-1pm  Callala Community Centre 42 Emmett St, Callala Bay
Callala Playgroup	<a href="#">(Callala playgroup   Facebook</a>	Thursdays 10am -12pm during school term First 2 visits free then \$4 a family CBCH
Callala Yoga	0422433159 FB & Insta @callalayoga	Monday: Mat pilates 5:30pm Tuesday: Yoga Flow 9:30am Wednesday: Yin Yoga 5:30pm CBCH
Culburra & District Community Health Services	Neil Watson 4447413 (volunteer driving) Pamela Clark 0427025819 Pat Porter 0408019930 (Op shop)	Volunteer for driving community bus or involvement in op shop
St Marks Anglican Church	Paul McPhail 2 Hunter St, Callala Bay (02) 44473277	Sundays at 5pm (afternoon tea @4:30pm)



## Activities at Club Callala Summer 2024-25



### CLUB HOURS

Mo: 10AM - 7PM  
 Tu: 10AM - 9PM  
 We: 10AM - 10:30  
 Th: 10AM - 10:30  
 Fr: 10AM - 10:30  
 Sa: 10AM - 10:30  
 Su: 10AM - 9PM

43 Callala Beach Road, Callala Beach  
 02 4446 5313 clubcallala.com.au  
 generalmanager@clubcallala.com.au



for information & bookings, call us on  
 02 4446 5313 (option 2) or contact  
 callalagolf@bigpond.com  
 open every day pending weather

### MONDAY:

Indoor Bowls - from 12PM

### TUESDAY:

Veterans Golf - from 7:30 to 1PM

### WEDNESDAY:

Callala Mixed Social Bowls - from 12PM

Ladies' Golf - from 8:30 to 1PM

### FRIDAY:

Fitness Class - from 10:30AM

### SATURDAY:

Mixed Golf Comp - from 7:30 to 1PM

### EVERY DAY:

Barefoot Bowls \$15 per person,  
 includes equipment hire  
 kids aged 12 & under play for free

### THURSDAY:

Bowls Raffle - tickets sold from 6PM

Bowls Schooner Draw - from 7:45PM

### FRIDAY:

Mega 50 Meat Tray Raffle -  
 tickets sold from 6PM, drawn 7PM

### SATURDAY:

Fisho's Raffle -  
 tickets sold from 12PM to 1:30PM

### LAST SATURDAY OF MONTH:

Meat Tray Raffle -  
 tickets sold from 6:30, drawn 7PM

### SUNDAY:

Meat & Seafood Raffle -  
 tickets sold from 4PM, drawn 5PM



31 Callala Beach Road, Callala Beach  
 02 4446 5313 or 0460 543 859  
 beachandbaystay.com.au



### Lunch Service

Wednesday to Sunday  
 12:00PM - 2:30PM

### Dinner Service

Tuesday, Wednesday,  
 Thursday, & Sunday  
 5:00PM - 8:00PM  
 Friday & Saturday  
 5:00PM - 8:30PM

### \$15 Lunch Specials

Served Wednesday, Thursday, & Friday

Tuesday \$23 Rump Steak Night

Wednesday \$18 Chicken Schnitzel Night

Thursday \$20 Pizza Night

Saturday \$15 Burger Lunch Special

**ALL WEEKLY SPECIALS DINE-IN ONLY**

### TUESDAY:

Happy Hour from 4PM - 6PM

Social Darts from 5PM

Trivia starting 6:30PM

### WEDNESDAY:

NPL Poker \$12 Entry - starting 7PM

### THURSDAY:

Bingo from 11AM

Happy Hour from 5PM - 7PM

Member's Badge Draw 6:30PM, 7:15PM, 7:45PM

### SATURDAY:

Live Entertainment Every Week

### LAST SATURDAY OF MONTH:

Second Chance Draw & Members Badge Draw

### SUNDAY:

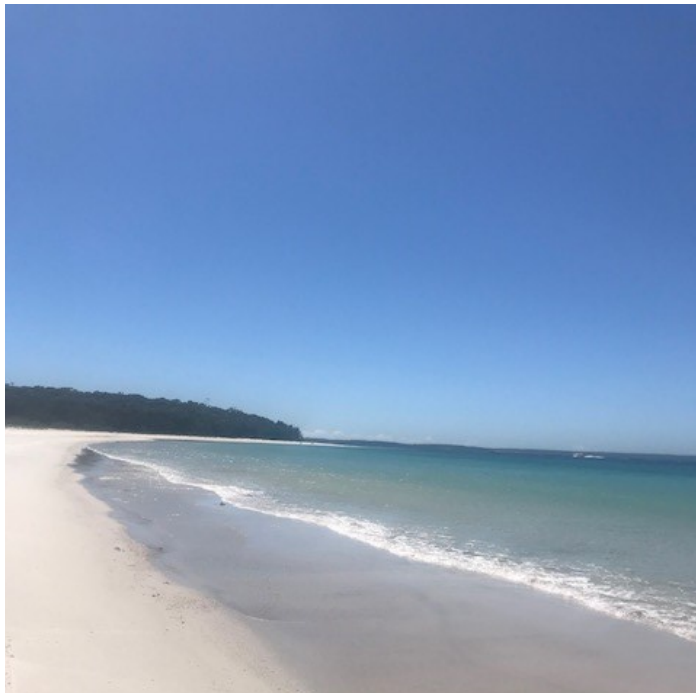
Fisho's Weigh-In on 4th Sunday at 2PM

Callala RSL Country Fishing Club



Callala Beach Road, Callala Beach 2540

**COURTESY BUS AVAILABLE FOR A GOLD COIN DONATION  
 SERVICING CALLALA BAY, CALLALA BEACH, AND MYOLA  
 MONDAY TO SATURDAY FROM 4PM, SUNDAYS FROM 3:30PM**



SCAN HERE



CALLALA BEACH  
NEWSLETTER

Please share this newsletter either digitally or in hard copy . Click on the QR code above to access the digital version of this newsletter

We value your contributions and your feedback regarding the newsletter.

Please contact us: [editor@callalabeach.org.au](mailto:editor@callalabeach.org.au)

#### CBPA meeting schedules for 2024

Meetings are held on the 3rd Monday of every 2nd month (all the even months). The first meeting of the year is in February and every 2nd month after that. Notification of our next meeting will be posted here, along with direct email and on our CBPA Facebook Page. Everyone welcome and invited to stay for a cuppa after the meeting.

**19th February 2024**

**15th April 2024 (Annual General Meeting)**

**17th June 2024**

**19th August 2024**

**21st October 2024**

**16th December 2024**

CPBA wishing you all the best for  
festive season.



We know that our villages become very busy during this time of year. Lets work together to ensure all our visitors and families who come together have a healthy, peaceful and happy time; and that we keep our beaches and nature clean for all to share.



Disclaimer: This newsletter contains information relating to the Callala Beach and Myola community. Information has been shared in good faith and the spirit of community, and was accurate to our best knowledge at the time of publication. Please direct any feedback to email: [editor@callalabeach.org.au](mailto:editor@callalabeach.org.au) .